

The use of the static/shock mode is illegal in Quebec and some Canadian cities. Disable the mode, use supplied short prongs and plastic insulated red tips.



SASHA &
LOUISE

GPS WIRELESS FENCE

Model:  Sentinelle

User Manual



Phone not included

CE RoHS



ISED



Made in China



About us

PRODUCTS FOR VIP DOGS

TESTED FOR RELIABILITY AND CLIMATE



SASHA &
LOUISE



Canadian based
family business

Learn about our story and our mission
toward our fellow dogs friends...

Read this manual carefully

- The success of this collar is tightly linked to the good use of it!
- For the dog's comfort and a faster GPS signal acquisition, we suggest leaving the collar close to an opening like a window or outside door. We like to keep our clipped to the patio door handle! Collar stays connected and battery last longer!
- Sentinelle is designed and certified for Canada
- The collar is backed by a one (1) year limited warranty

CONTENT

01

01-05 IMPORTANT SAFETY INSTRUCTIONS

Safety Instructions 01
Specifications 05

02

06-09 EXPLORING WIRELESS FENCE

In the Box 06
Transmitter 07
Receiver Collar 08

03

10-18 SETTING UP WIRELESS FENCE

Preparing Receiver Collar &
Transmitter 10
Setting Up Fence with
Receiver Collar Only 11
Setting Up Fence with APP 16

04

19-28 USING WIRELESS FENCE

Using Test Light Tool 19
Fitting Receiver Collar 20
Training with APP 22
Training with Transmitter 23
Maximizing Remote Distance 25
Pairing Transmitter with Collar 26
Tips for Training Your Dog 27

05

29
CARE
AND
MAINTENANCE

06

30-32
TROUBLE-
SHOOTING
GUIDE

IMPORTANT SAFETY INSTRUCTIONS



WARNING

READ ALL INSTRUCTIONS BEFORE USE AND SAVE FOR FUTURE REFERENCE

When using the wireless dog fence, basic safety precautions should always be followed to reduce the risk of injury to you, your dog, and/or other property, including the following:



DO NOT use on aggressive dogs. Such dogs may react adversely and cause injury to people or other dogs. When dealing with an aggressive dog, seek the help of a dog training professional or veterinarian.



Not a toy. Adult supervision and extreme caution are required when used by or near children. Children should be supervised to ensure that they do not play with the product. Keep the product and all accessories out of reach of children.



DO NOT use indoors. Not intended for indoor use. DO NOT use in areas where GPS signals are weak or blocked (e.g., under a tree or a roof). Ensure a signal of at least 3 bars for a successful positioning.



DO NOT attempt to touch the static contact points with your hands when the collar is powered on.



DO NOT leave the receiver collar on your dog for more than 12 hours per day. When possible, reposition the collar on your dog's neck every 1 to 2 hours.

INTENDED USE

- This wireless dog fence is not intended for use by persons (including children) with reduced physical, sensory or mental capabilities, or lack of experience and knowledge, unless they have been given supervision or instruction concerning the use of the appliance by person responsible for their safety.
- Intended for dogs only and should not be used with humans. Only use in a humane manner to train and educate dogs. DO NOT attempt to use the product in any way other than intended or use on other animals or humans.

IMPORTANT

- The wireless dog fence is a battery-operated device. Allowing your dog to chew on the receiver collar or the battery may cause damage to the product, cause a fire hazard, or be hazardous for your dog. Inspect the collar for punctures to the battery and/or the plastic cover to the battery before placing it on any dog.
- DO NOT leave the receiver collar in high temperatures for extended periods of time. The collar contains electronic components, including a lithium-ion battery, that are sensitive to extreme temperatures.
- Only charge your receiver collar and transmitter with the cable provided. Charge with a 5V/1A power adapter.
- DO NOT attempt to disassemble, repair, modify or replace any part of the wireless fence as it will void your warranty.
- There is no containment system, including a residential fence or the wireless fence, that can contain all dogs 100% of the time. Some dogs are very smart and can escape any containment. All containment systems can break or malfunction. Please monitor your dog regularly while using the system. If your dog is dangerous to others, do not rely on a containment system where they are unmonitored.
- When creating fences, it is important to pay attention to your surroundings and watch where you are walking. Avoid looking down while walking a fence. Avoid dangerous areas that could result in serious injury or death.
- The wireless fence is not rated to act as a primary pet restraint device. Make sure your dog is properly secured and safe at all times.

- The wireless fence works best when pet parents take the time to train their dog, as with any obedience training program. This is particularly important upon introduction. Spend time helping your dog understand the location of fence boundaries and the corresponding stimuli that alert them and keep them safely contained. We cannot guarantee that the system will keep your dog within the established boundary. Accordingly, if you have reason to believe that your dog may pose a danger to others, or harm itself, you should not rely solely upon the wireless fence to keep your dog from crossing the boundary.
- The receiver collar is IP67 dust-proof and water-resistant. However, do not submerge in water for a long time. As the collar is used, damage and wear may affect the sealing.

TO KEEP SAFE & COMFORTABLE

- Avoid leaving the receiver collar on your dog for more than 12 hours per day. When possible, reposition the collar on your dog's neck every 1 to 2 hours.
- Check the fit to prevent excessive pressure. Strap must fit snugly around your dog's neck with contact points gently touching your dog's skin.
- DO NOT connect a leash to the collar. It will cause excessive pressure on the contact points.
- When using a separate collar for a leash, do not put pressure on the receiver collar.
- Check the contact area daily for signs of a rash or a sore. If a rash or sore is found, discontinue use of the collar until the skin is healed.
- To prevent skin irritation from the contact points, we recommend removing the collar at night and/or when not in use.
- Wash your dog's neck area and wipe the contact points of the collar weekly with a damp cloth.
- You may need to trim the hair in the area of the contact points. Never shave your dog's neck, this may lead to a rash or infection.
- Dogs shall weigh at least 7.9lbs and age 6 months or more to safely use the wireless fence.

TO PREVENT UNINTENDED CORRECTION

- Make sure that your dog is not wearing the receiver collar when turning ON or adjusting the transmitter.
- Always remove the receiver collar before performing any transmitter testing.
- Before placing the collar on your dog, test the boundary area and width after any change.
- Train your dog before allowing your dog to run free. The wireless fence works best when you take the time to train your dog, as with any obedience training program. This is particularly important upon introduction.
- Perform periodic maintenance checks to make sure that the wireless fence is properly functioning for your dog's safe containment. Check the transmitter periodically to make sure it is operating properly.

SAVE THESE INSTRUCTIONS

The use of the static/shock mode is illegal in Quebec and some Canadian cities. Disable the mode, use supplied short prongs and insulated plastic red tips.

SPECIFICATIONS

Receiver Collar

Input	DC 5V --- 1A
Battery	600mAh/3.7V lithium-ion
Charging Time	2-3 hours
Standby Time	36 hours (GPS on) 60 days (GPS off, training only)
Positioning Accuracy	2m (open area)
Collar Length	25in / 62cm
IP Rating	IP67

Transmitter

Input	DC 5V --- 1A
Battery	420mAh/3.7V lithium-ion
Charging Time	2-3 hours
Standby Time	30 days
Remote Control Range	800m+(open area)
IP Rating	Non-waterproof
Frequency	433 MHz

EXPLORING WIRELESS FENCE

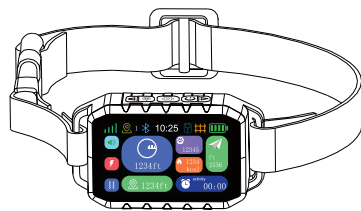
In the Box



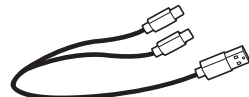
Check if all parts and accessories are included. Contact us if there is any part missing or damaged.



Transmitter x1



Receiver Collar x1



USB-C Charging Cable x1



Contact Point x4
(two on receiver collar)



Test Light Tool x1



User Manual x1



Conductive Silicone Cap x4
(two on receiver collar)



Lanyard x1



Insulated plastic cap
x2

Transmitter

Training Mode / Level Adjustment Dial

Press down to select Beep / Vibration / Static Stimulation mode, then turn the dial to adjust the corresponding level.

Turn on/off collar screen

Static Stimulation

Press once, the collar will deliver static stimulation once. Press and hold for up to 5s continuous static stimulation.

Beep

Press once, the collar will beep once. Press and hold for up to 10s continuous beeps.



Antenna

Battery Level of Transmitter

Channel

On/off

Vibration

Press once, the collar will vibrate once. Press and hold for up to 10s continuous vibrations.

Boosted Static Stimulation (for training stubborn dogs)

15% more of the normal static stimulation mode.

LCD Display

Channel (Collar) Selected

Beep Volume / Vibration / Static Stimulation Level

Boosted Static Stimulation

Static Stimulation

Vibration

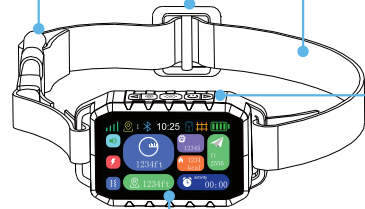
Beep

Receiver Collar

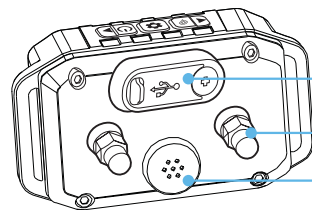
Fasten Buckle

Slide Buckle

Collar Strap



LCD Display



Charging Port

Contact Points

Microphone

Control Functions



Center Point Setting

With the collar turned on and GPS ready, press and hold to set the center point.

Navigation Arrow

In Programming interface, short press to select a menu or adjust parameters.



Warning Mode Selection

With the collar turned on, short press to select a warning mode when your dog is out of fence boundary: Beep, Vibration, Beep+Vibration, Beep+Vibration+Static Stimulation.

Enter / Exit Settings

With the collar turned on, press and hold to enter Programming interface. In Programming interface, short press to enter sub-menu, press and hold to return to previous menu.



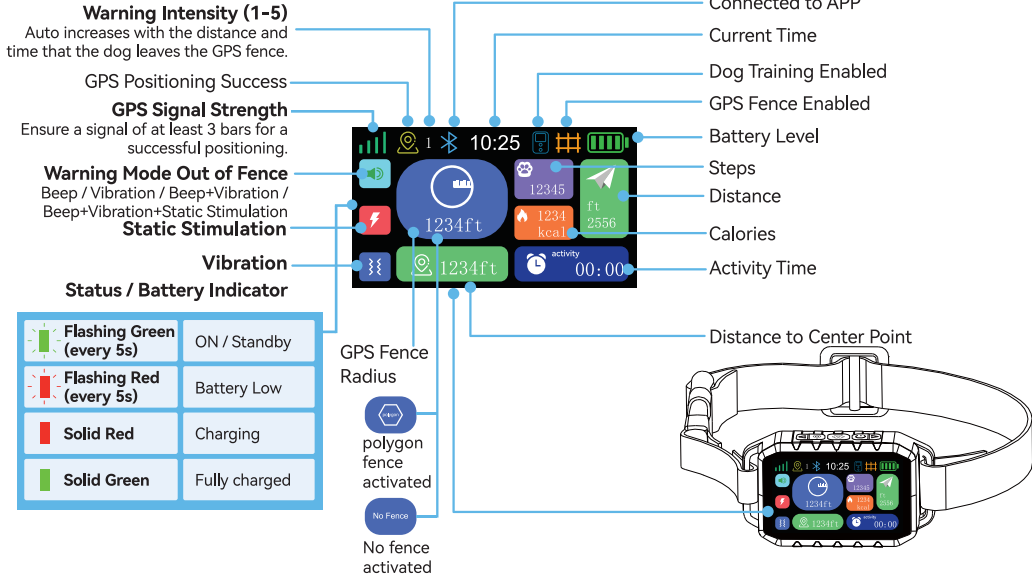
ON / OFF

Press and hold for 2s to turn on or off the receiver collar.

Navigation Arrow

In Programming interface, short press to select a menu or adjust parameters.

Receiver Collar



SETTING UP WIRELESS FENCE

Preparing Receiver Collar & Transmitter

We highly recommend that you fully charge the receiver collar and transmitter with a 5V/1A power adapter (not included) before first use. Once fully charged, secure the rubber cover fully to ensure debris does not enter the charging port.

1

Charging
Connect the receiver collar and transmitter to a DC 5V/1A power adapter (not included) with the included cable. A fully charge takes about 2 to 3 hours.

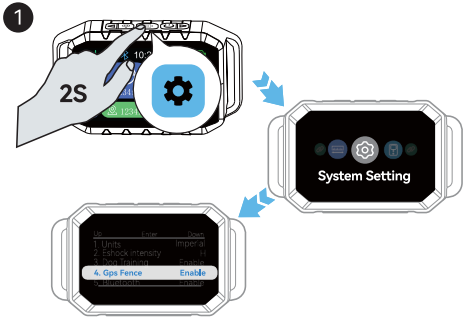
2

Turning ON
Press and hold for 2s to turn on the receiver collar. Toggle to ON position turn on the transmitter.

Setting Up Fence with Receiver Collar Only

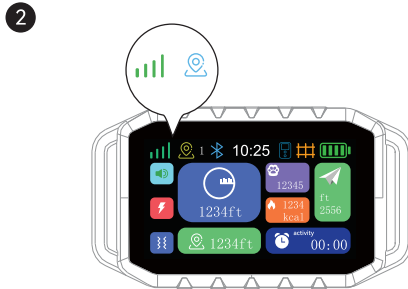


- Use outdoors in an open area only. DO NOT use indoors or where GPS signals are weak or blocked (e.g., under a tree or a roof). Ensure a signal of at least 3 bars for a successful positioning.
- Only circular fence can be created with receiver collar. For polygon fences, set up with APP.
- DO NOT touch the contact points to avoid accidental electric shock during setting up.



Enabling GPS Fence

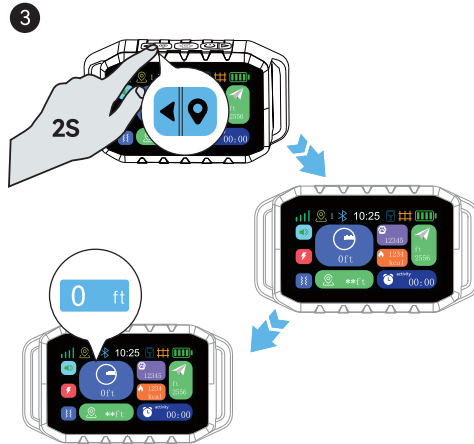
With the collar on, press and hold to enter Programming interface. Short press to select System Setting, then short press to select and enable GPS Fence. Press and hold to save and exit.



GPS Positioning

Once GPS Fence is enabled, wait 1-3min to search for GPS signal outdoors in an open area. and will turn solid on once successfully positioned.

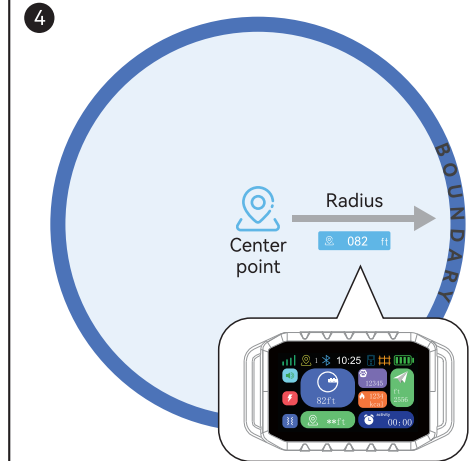
* Ensure a signal of at least 3 bars for a successful positioning.



Setting Center Point

At the center of pet area, press and hold to set as the center point. Once successfully set, the distance to center point will be 0 and two beeps will be heard.

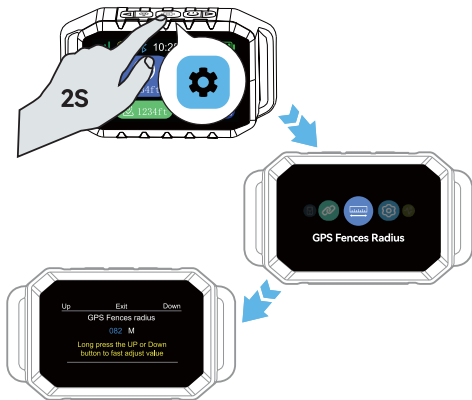
* Set outdoors in an open area only.



Measuring Fence Radius

Starting from the center point, walk to your desired fence boundary. The value 082 ft displayed is the radius of the GPS fence.

5

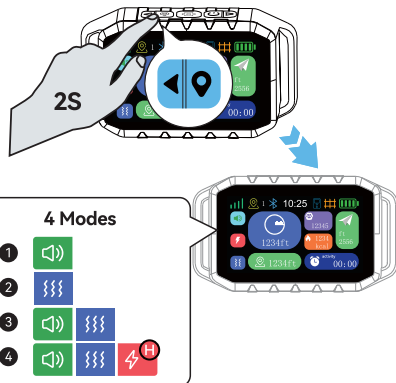


Setting Fence Radius

With the collar on, press and hold to enter Programming interface. Short press or to select GPS Fences Radius, then short or long press or to set the radius (82ft-7000ft/25m-2133m). Press and hold to save and exit.

6

The use of the static/shock mode is illegal in Quebec and some Canadian cities. Disable the mode, use supplied short prongs and insulated plastic red tips.



Setting Warning Mode

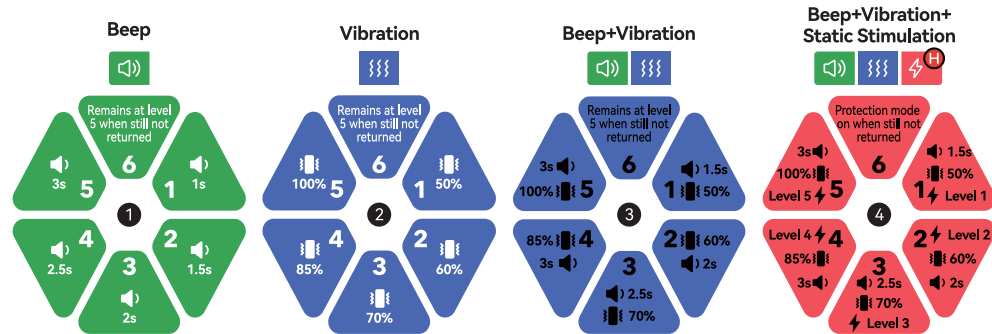
With the collar on, short press , then press or to select a warning mode: Beep, Vibration, Beep+Vibration, Beep+Vibration+Static Stimulation.



Protection Mode: When warning mode (Beep+Vibration+Static Stimulation) has been triggered for 5 times, 1-minute protection mode will be triggered with Protect Mode on display and all warnings paused. To cancel, press any button or wait 1min for warning mode to resume.

7

How Four Modes Work When Out of Fence Boundary



How Warning Mode Works

When your dog is out of the boundary, the receiver collar beeps, vibrates or static stimulation (depending on the warning mode you set) to get his attention until he returns to the GPS fence. The warning intensity (1-5) auto increases with the distance and time that the dog leaves the fence.

Setting Up Fence with APP



- Make sure that your mobile is connected to a secure network and Bluetooth is enabled. Allow access to your Location during connection.
- Make sure that the Bluetooth on the receiver collar is enabled.
- You can create circular fence with receiver collar only or use APP for polygon fences and more customizable options.

1

For iOS



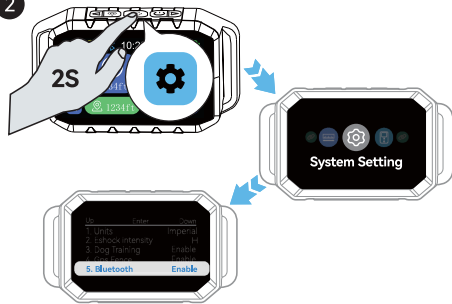
For Android



Download APP

Search or scan QR code to download **PurpleEfence** app. Turn on Bluetooth on your mobile and allow access to your Location.

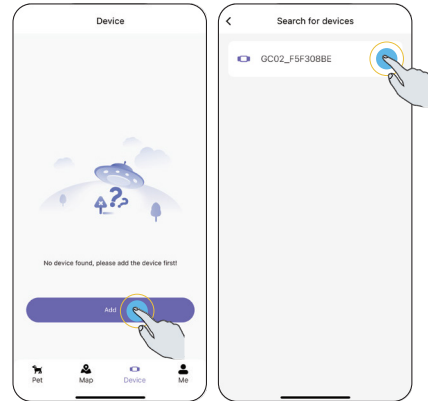
2



Enabling Bluetooth

With the collar on, press and hold to enter Programming interface. Short press to select System Setting, then short press to select and enable Bluetooth. Press and hold to save and exit.

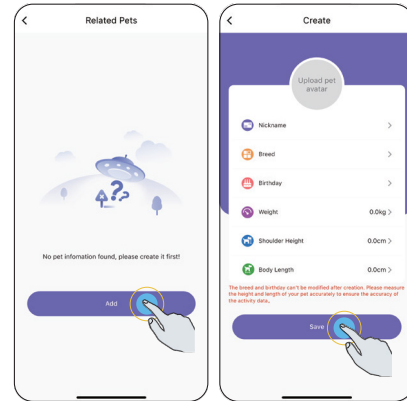
3



Add Device

Open App, on Device page, tap **Add** to search for the collar. Find the collar in the list and tap **+** to add.

4

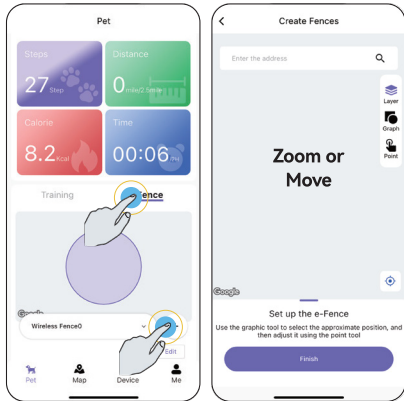


Add Pet

If no pet is added, you will be prompted to add your pet. Tap **Add**, fill in your pet profile and tap **Save** to save. On Related Pets page, tap **+** to bind with the pet. Once successfully added, the status of the collar will be listed on the Pet page. Bluetooth on the collar will also turn blue.

Louise's advice: Press **LAYER** it's way easier!

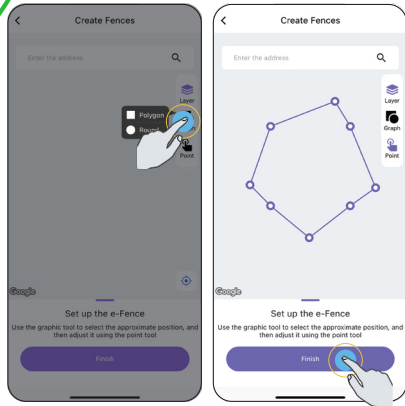
5



Creating Wireless Fence

On Pet page, select **Fence** then tap **+** to create a wireless fence. Zoom or move the map to roughly adjust the location and coverage area of the fence.

6



Adjusting Wireless Fence

Tap **Graph** to select a Polygon or Round shape. If Round one is selected, adjust the radius. If Polygon one is selected, tap **Point** to adjust the fence boundary. After adjusting, tap **Finish** and name the fence.

* You can create up to 6 fences in the app.

USING WIRELESS FENCE

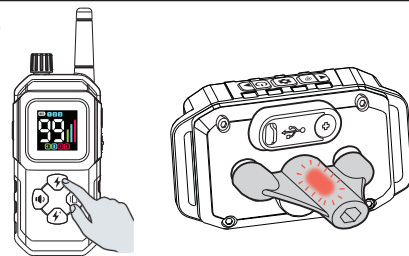
Using Test Light Tool



- You can use the test light tool to check the collar for static stimulation without touching the contact points. It can also be used to tighten or loosen the contact points. Save the test light tool for future testing.
- If the test light does not flash, recharge the battery and re-test. If the test light still does not flash, contact our Customer Support.

The use of the static/shock mode is illegal in Quebec and some Canadian cities. Disable the mode, use supplied short prongs and insulated red tips.

1

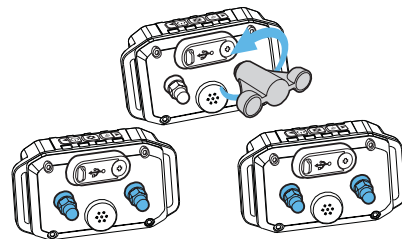


Static Stimulation Test

1. Turn the transmitter and receiver collar on.
2. Hold the test light contacts to the contact points.
3. Press the Static Stimulation button on the transmitter. The test light will flash.

* The test light will flash brighter at higher static stimulation levels.

2



For longer-haired dogs

For shorter-haired dogs

Tighten or Loosen Contact Points

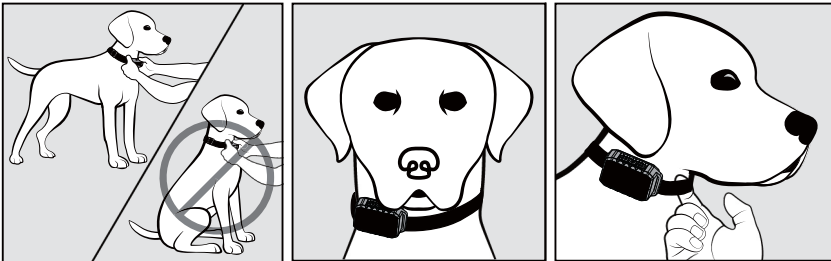
Longer or thicker fur may require longer contact points, while shorter-haired dogs may do better with shorter ones. Select the appropriate ones and tighten with the tool.

Fitting Receiver Collar



- **Important:** The proper fit and placement of your receiver collar is important for effective training or warning. The contact points must have direct contact with your dog's skin on the underside of his neck.
- **Important:** Trim any excess strap to prevent it from catching and pulling off the dog.
- **Important:** Avoid leaving the collar on your dog for more than 12 hours per day. When possible, reposition the collar on your dog's neck every 1 to 2 hours. Never attach a leash to it - use a separate collar or harness.
- You may need to trim the hair in the area of the contact points. Never shave the dog's neck, this may lead to a rash or infection.

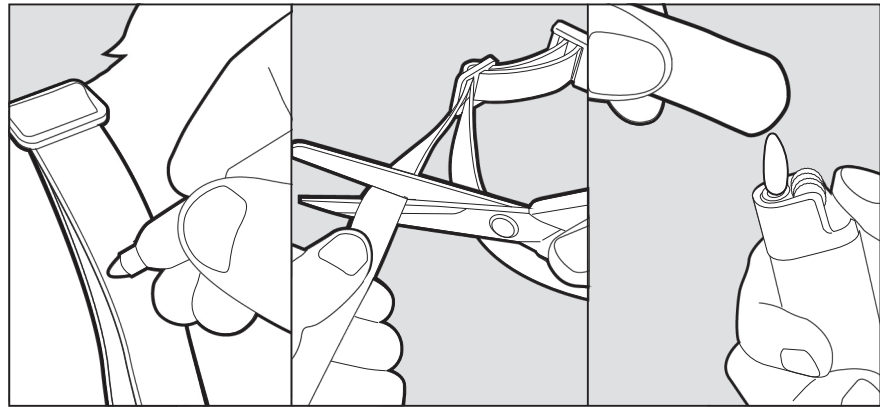
1



Fitting Collar

1. Start with your dog standing comfortably.
2. Position the collar underneath your dog's neck with contact points touching the skin and slightly to either side, not directly centered. Adjust the strap and buckle the collar to fit snugly.
3. Check the tightness by inserting one finger between the strap and your dog's neck. The fit should be snug but not constricting.

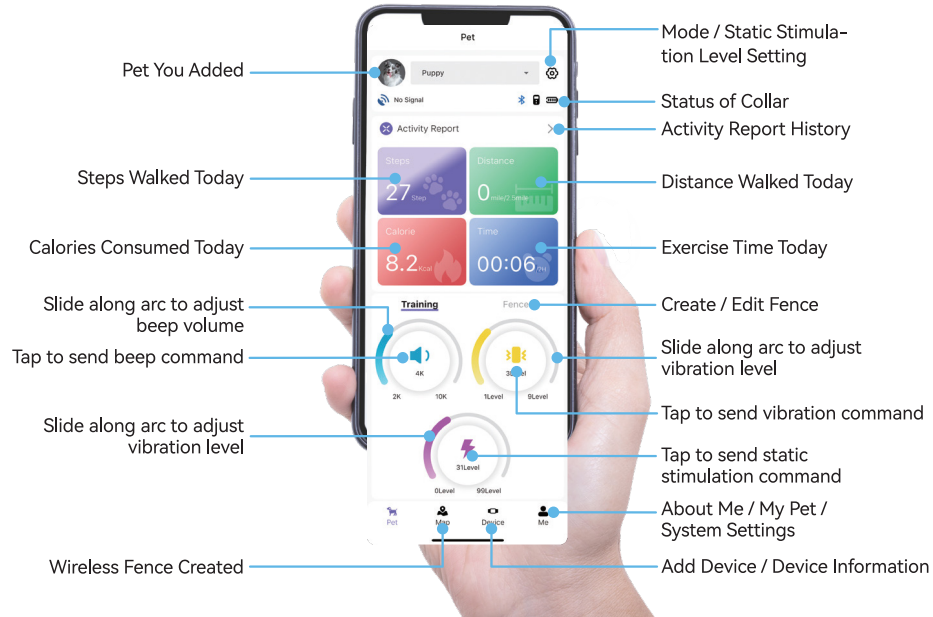
2



Trimming Collar

1. Mark the desired length of the receiver collar. Allow room for growth or a thicker winter coat.
2. Remove the collar from your dog and trim the excess strap.
3. Before placing it back onto your dog, seal the edge of the cut strap by applying a flame along the frayed edge.

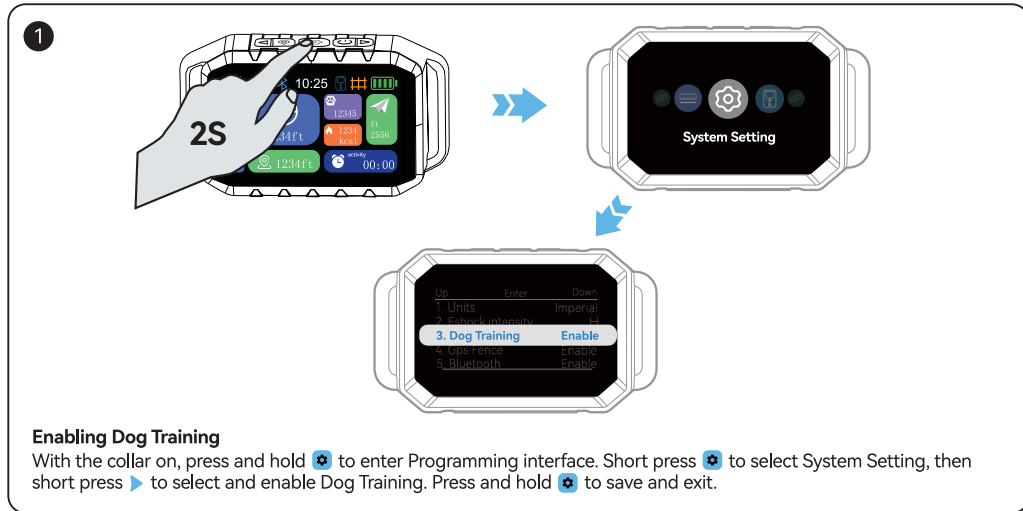
Training with APP



Training with Transmitter



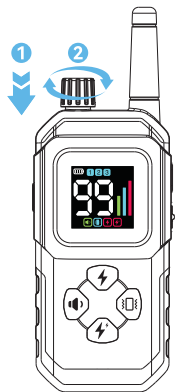
Make sure that Dog Training on the receiver collar is enabled before trying to train with the transmitter.



The use of the static/shock mode is illegal in Quebec and some Canadian cities.
Disable the mode, use supplied short prongs and isolated red tips.


2

Adjusting Level



Sending Command



-  Beep
-  Vibration
-  Static Stimulation
-  Boosted Static Stimulation (for training stubborn dogs)

Training with Transmitter

1. Press down the dial to select Beep / Vibration / Static Stimulation mode, then turn the dial to adjust the corresponding level.
2. Short press or hold to send beep / vibration / static stimulation command to the receiver collar.

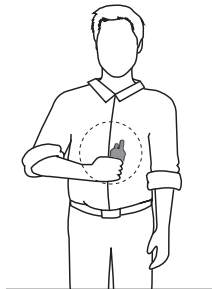
Maximizing Remote Distance



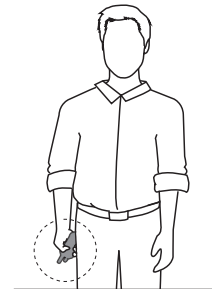
- DO NOT cover the transmitter antenna. The range is reduced when the antenna is covered or in contact with your body.
- Max remote control range: 1/3 miles / 500 meters in an open area.



Maximum Range



Typical Range



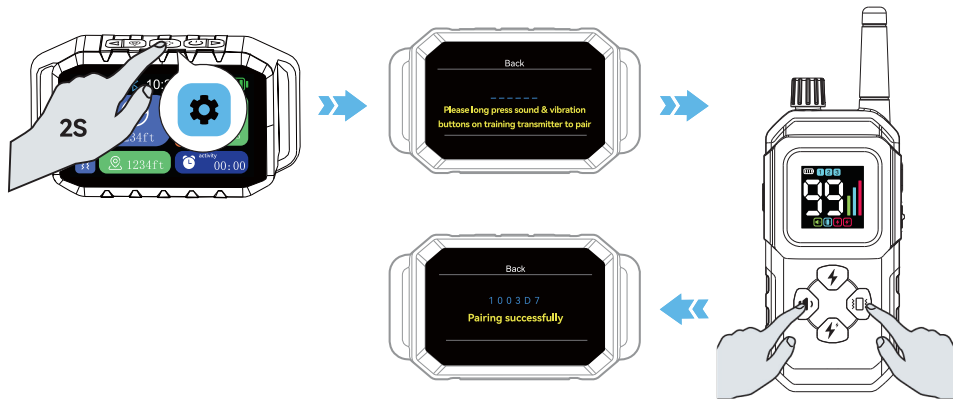
Minimum Range

The range of your transmitter may vary depending on how you use the transmitter. For maximum range, hold the transmitter away from your body and avoid touching the antenna. Charge the transmitter and collar properly to maximize signal strength.

Pairing Transmitter with Collar



The transmitter has been paired with the receiver collar at the factory. However, if you need to pair a new transmitter or pair after a factory reset, follow the steps below.



With the collar on, press and hold to enter Programming interface. Short press or to select Dog Train Collar Pairing, then short press to pair as instructed on screen.

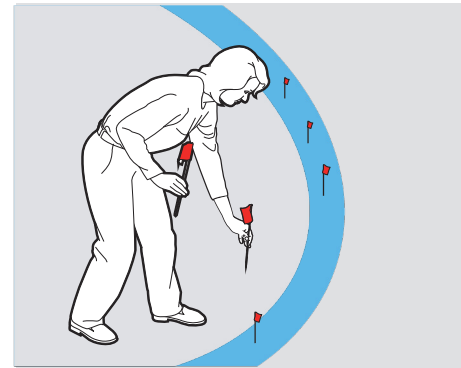
Tips for Training Your Dog

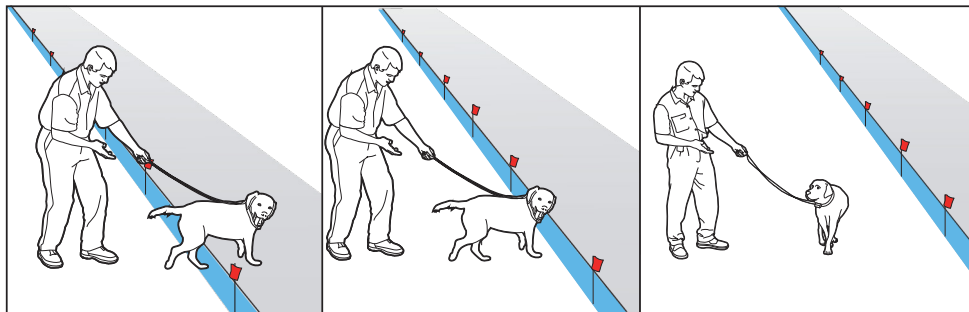


- Remember that this wireless fence is not a solid barrier. Using it successfully requires that you spend some time training your dog.
- While your dog is still learning the boundary, contain him by another means, such as with a leash.
- Put a separate non-metallic collar on your dog's neck and attach a leash. Be sure the extra collar does not put pressure on the contact points.
- If your dog appears to be stressed, slow down the training schedule, add additional days of training or increase the amount of play time. Common stress signals include pulling on the leash toward the house, ears tucked or pulled back, tail down or tucked between legs, body lowered, nervous/frantic movement or stiffening of the dog's body, lip-licking or yawning.

For Optimal Training Results:

1. Prepare a leash, your dog's favorite treats, and several boundary flags.
2. Make sure that GPS, center point and fence radius are set successfully.
3. Fit the receiver collar on your dog's neck. Allow your dog to wear the collar for several minutes then recheck the fit.
4. Mark the boundary with boundary flags as visual reminders for your dog to learn where the boundary zone is located.
5. Put a separate non-metallic collar on your dog's neck and attach a leash.





6. Allow your dog to cross the boundary and receive warnings (beep/vibration/static stimulation) from the receiver collar. Ask him to come back into the fence, praise and reward him. Your goal is for your dog to associate being inside the fence with rewarding experiences.
7. Wave the boundary flags each time you lead your dog outside the boundary. Your goal is for your dog to associate being outside the fence with stimulation.
8. Repeat training at different boundary points. Remember to keep your dog on a leash throughout this process while he is still learning the boundary. Also, never coax your pet to leave the pet area.

CARE AND MAINTENANCE

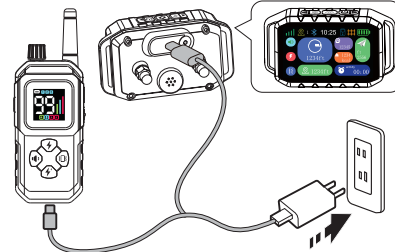


- The receiver collar is IP67 dust-proof and water-resistant. However, do not submerge in water for a long time. As the collar is used, damage and wear may affect the sealing.
- The transmitter is non-waterproof. Never immerse in water or any liquids.



Daily Maintenance

- Make sure the rubber charging cap is securely in place when the receiver collar is in use.
- After each training session, carefully inspect the collar for any missing parts or damage to the casing. Damaged or broken casing may affect the waterproof guarantee on the collar.
- After confirming that there is no damage to the casing, rinse the receiver and clean out any dirt or debris.
- The transmitter is non-waterproof. Do not rinse or immerse in water or any liquids.



Storage

- Fully charge the transmitter and receiver collar before storing for extended periods of time.
- While in storage, charge once a month to prevent over-discharge and shortening battery life.
- Store in a cool, dry place away from direct sunlight or any extreme climates.

TROUBLESHOOTING GUIDE



The troubleshooting guide addresses the most common problems. If problems persist, feel free to contact the Customer Support

Problem

Solution

Collar or receiver does not charge

- Connect the receiver collar and transmitter to a DC 5V/1A power adapter with the included cable only.
- Check if the cable and adapter are properly connected to the receiver collar or transmitter.
- Make sure that the charging ports on the collar and transmitter are free of any dirt or debris.

Collar or receiver won't turn on

- Battery low. Fully charge the receiver collar and transmitter.
- Press and hold ON/OFF button for 2s to turn on the receiver collar. Toggle to ON position turn on the transmitter.

Receiver collar does not respond to the transmitter

- Receiver collar not paired with transmitter. Pair the collar with the transmitter as instructed.
- Receiver collar not turned on. Press and hold ON/OFF button for 2s to turn on the receiver collar.
- Receiver collar is charging. The collar will not respond to the transmitter during charging.
- Receiver collar damaged. Contact Customer Support for help.

Problem

Solution

No GPS signal

- DO NOT use indoors or where GPS signals are weak or blocked. Use outdoors in an open area only.
- GPS Fence not enabled. Enable GPS fence to search for GPS signal.
- It takes about 1-3min to search for GPS signal.

GPS positioning failed

Ensure a signal of at least 3 bars for a successful positioning.

Failed to set center point

- Set the center point only after GPS is successfully positioned.
- Set outdoors in an open area only.

Receiver collar does not work effectively as first use

- Check if the receiver collar properly works. Adjust training mode or training level.
- Your dog gets accustomed to wearing the collar. Remove the collar when not in use (training).
- GPS signal interference and fence boundary disabled. Reset the fence radius outdoors in an open area.

Warning modes triggered inside fence

- Incorrect positioning under weak GPS signal. Use outdoors in an open area only. DO NOT use indoors or where GPS signals are weak or blocked.
- Fence radius too small. Try to set a larger radius.

Warning mode not triggered when outside boundary

- Check if the receiver collar is in the place where GPS signals are weak, blocked or interfered.
- Warning mode will not be triggered under 2 bars or less GPS signal.
- Warning mode will not be triggered when your dog remains stationary outside boundary.

Problem

Solution

Distance error when returning to center point

- Reset the center point.
- Walk near the center point. Avoid remaining stationary. GPS accuracy improves with movement due to reduced satellite drift in dynamic states. Static positioning may incur errors from data upload latency and refresh intervals.
- GPS signal delay. Try again later or re-establish positioning.
- GPS signal interference. There will be a 3-5 meter buffer zone around boundaries caused by inherent GPS signal drift and system processing latency during boundary detection.

Failed to change dog's behaviour

- The collar works best when you take the time to train your dog. Training is essential while the collar only aids in training. Seek support from a professional dog trainer.
- Do training session for about 10-15 minutes each time. Do not try to train too much or too quickly. More frequent short sessions are better than less frequent, longer sessions.

Warning beeps once turned on

- Check if the collar is turned on outside the fence. Please return to the fence, or reset the center point or fence radius.
- Turn on the collar under a signal of 4 bars.

Failed to connect the collar with APP

- Make sure that your mobile is connected to a secure network and Bluetooth is enabled.
- Make sure that the Bluetooth on the receiver collar is enabled.
- Check if the battery is low. Charge when necessary.

Compliance Statement – Canada

This device complies with Innovation, Science and Economic Development Canada's licence-exempt RSS standard(s). ISED certification on apparatus and website.

Operation is subject to the following two conditions:

- this device may not cause interference; and
- this device must accept any interference, including interference that may cause undesired operation of the device.

Warning

Changes or modifications not expressly approved by the party responsible for compliance could void the user's authority to operate the equipment.

RF Exposure Statement

This device complies with RF exposure limits for portable, low-power devices. No minimum separation distance is required under normal operating conditions.

成品尺寸：145*100mm

骑马钉

材质：128克铜版纸

四色印刷